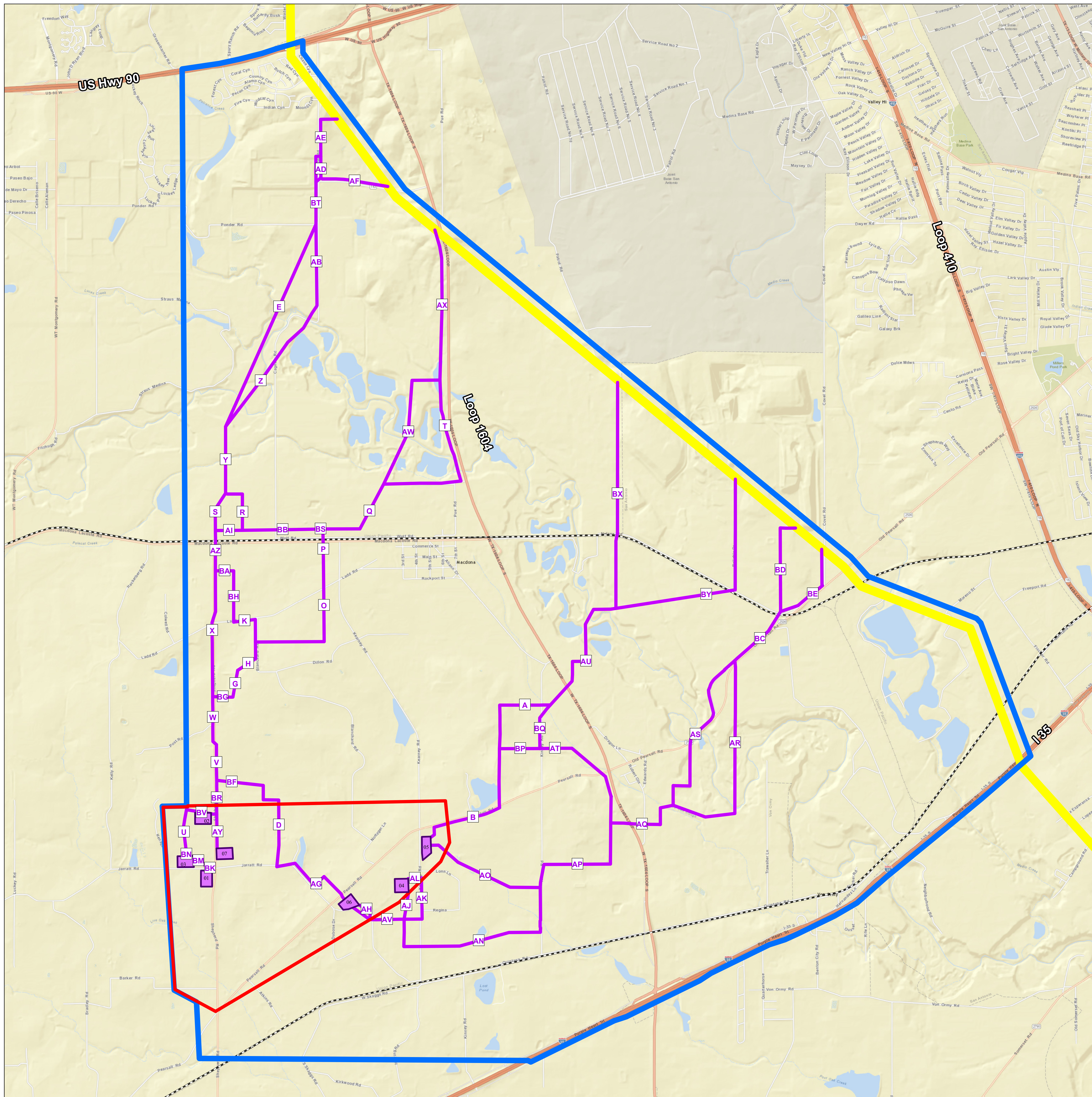


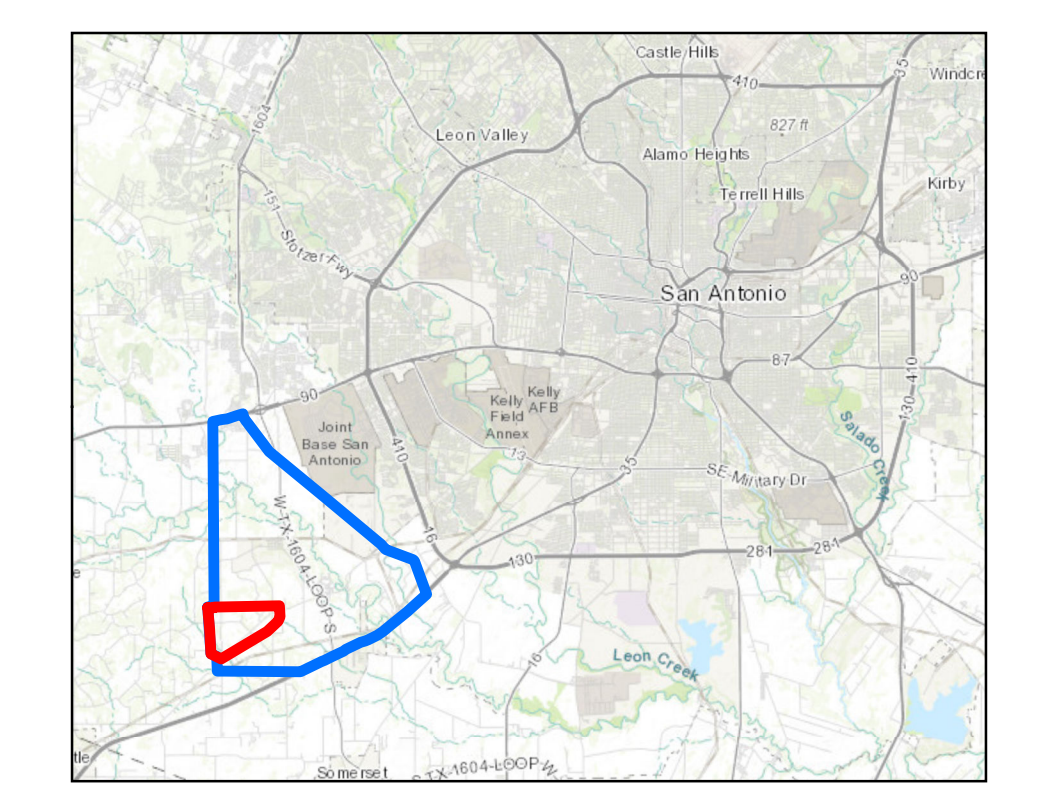
Shepherd Substation and Transmission Line Study Areas

(Sheet 1 of 1)

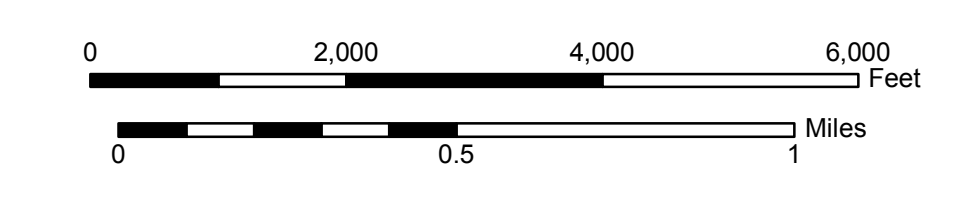
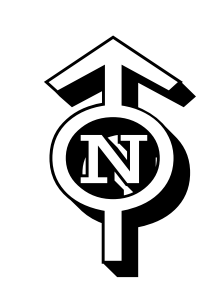


Legend

- Transmission Line Study Area
- Substation Study Area
- Potential Substation Site
- Potential Transmission Line Route
- Existing Transmission Corridor
- Railroad



Vicinity Map



Service Layer Credits: 2015 NAIP Imagery, TNRS. Sources: Esri, HERE, DeLorme, Intermap, increment P Corp., GEBCO, USGS, FAO, NPS, NRCAN, GeBCO, IGN, Kadaster NL, Ordnance Survey, Esri Japan, METI, Esri China (Hong Kong), Swisstopo, MapboxIndia, © OpenStreetMap contributors, and the GIS User Community
Sources: Esri, HERE, DeLorme, USGS, Intermap, INCREMENT P, NRCan, Esri Japan, METI, Esri China (Hong Kong), Esri Korea, Esri